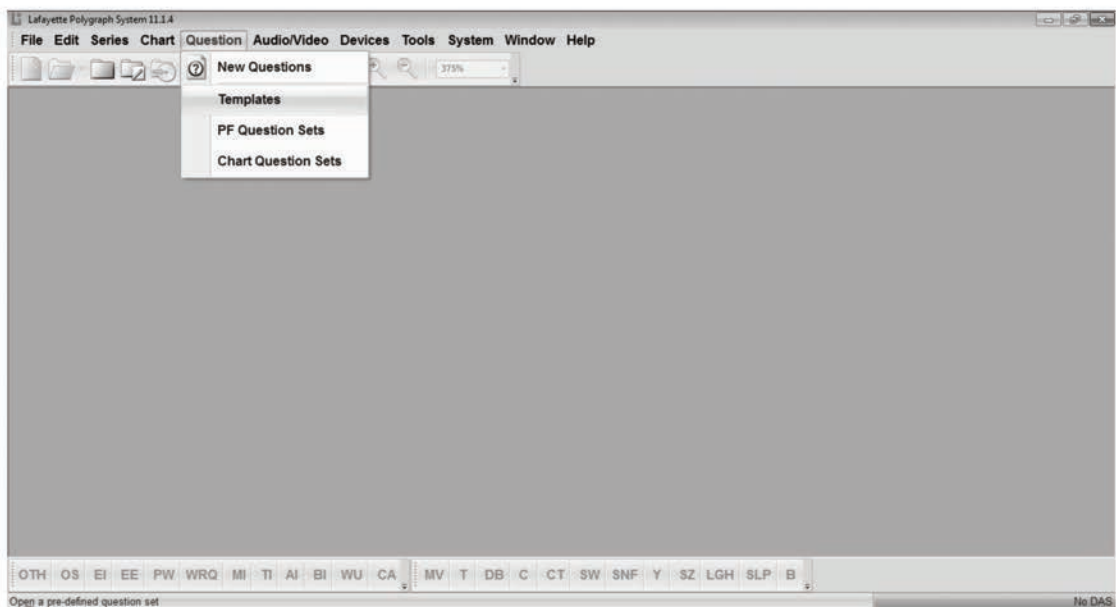


Lafayette Tech Talk – Question Editor

Use of the question editor and familiarity with its features and application to a variety of examination techniques is central to the effectiveness of an examination.

The Lafayette question editor is the most fully featured question template editor available today, and is easy to use. The question editor will assist examiners in maintaining a list of useful examination templates, and can assist in efficient and effective examination workflow.

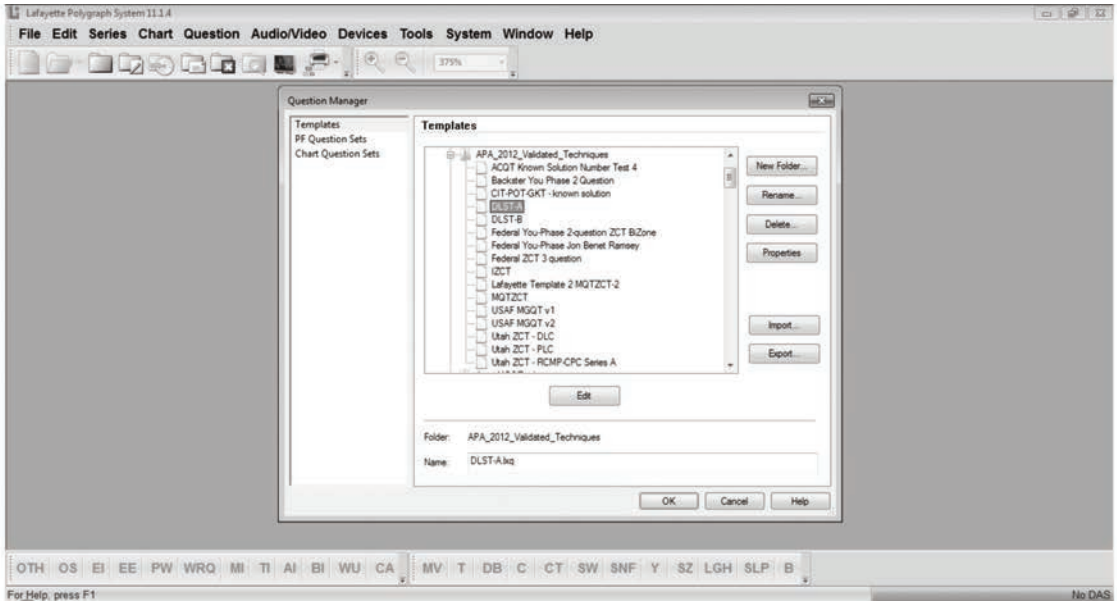
Access the Lafayette question editor by selecting the “Templates” item from the “Questions” menu in the LX Software.



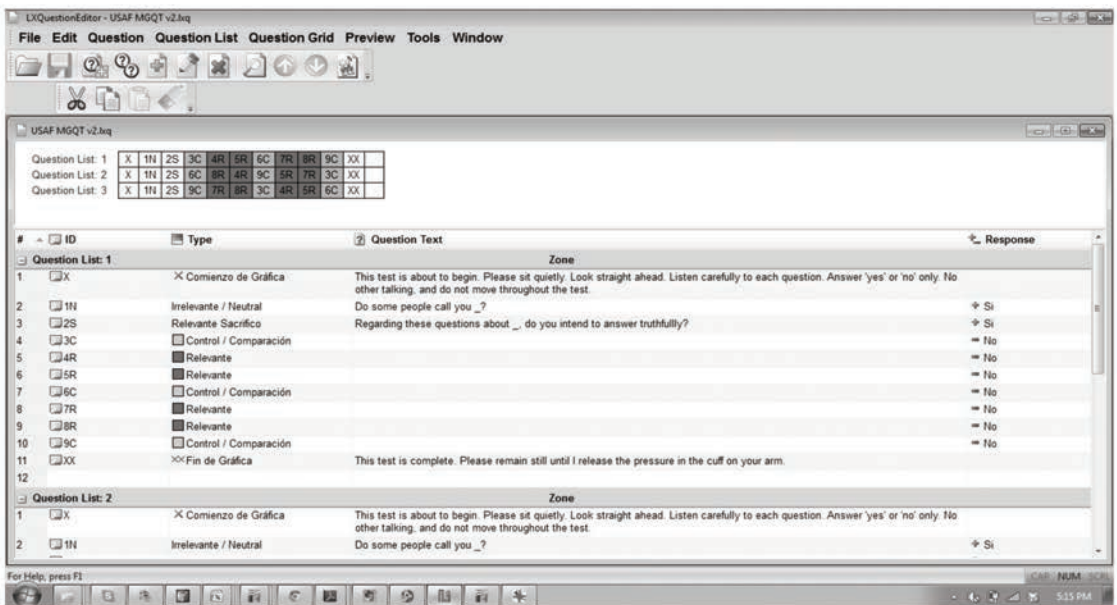
Other menu items will open question lists attached to an exam PF or to individual examination charts.

Examiners who prefer the legacy question editor can elect to use that editor, which remains functional with the LX Software, although will fewer capabilities than the newer improved question editor.

The first thing you will see is a dialogue that allows you to navigate the folder tree containing all installed and saved question templates.



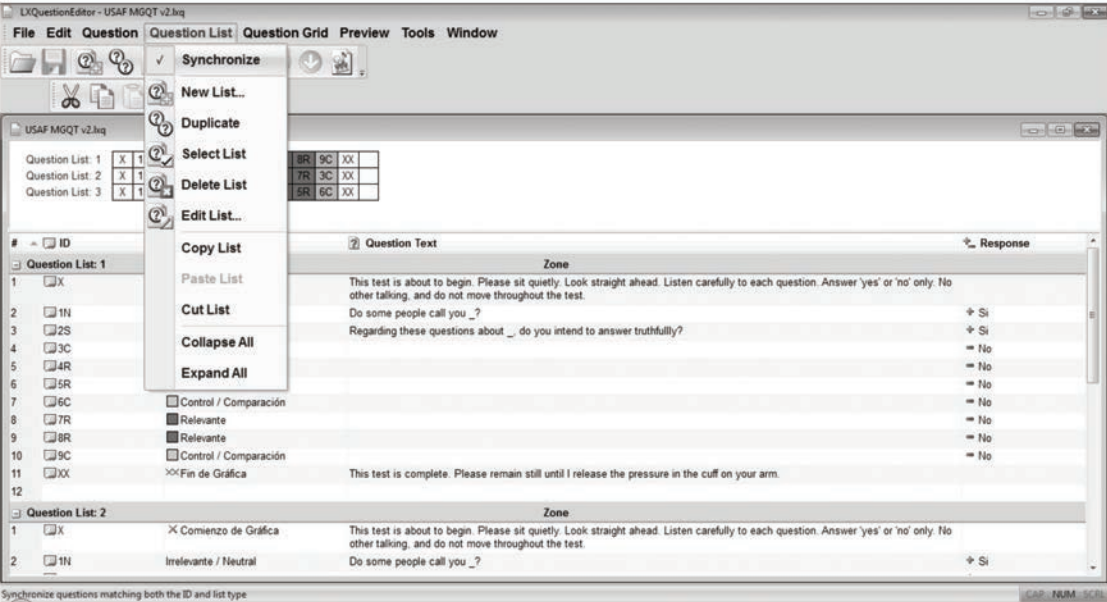
Open a template by double-clicking, or by selecting the template and clicking the “Edit” button. If you click “OK” the question will be attached to the exam PF without opening it for editing.



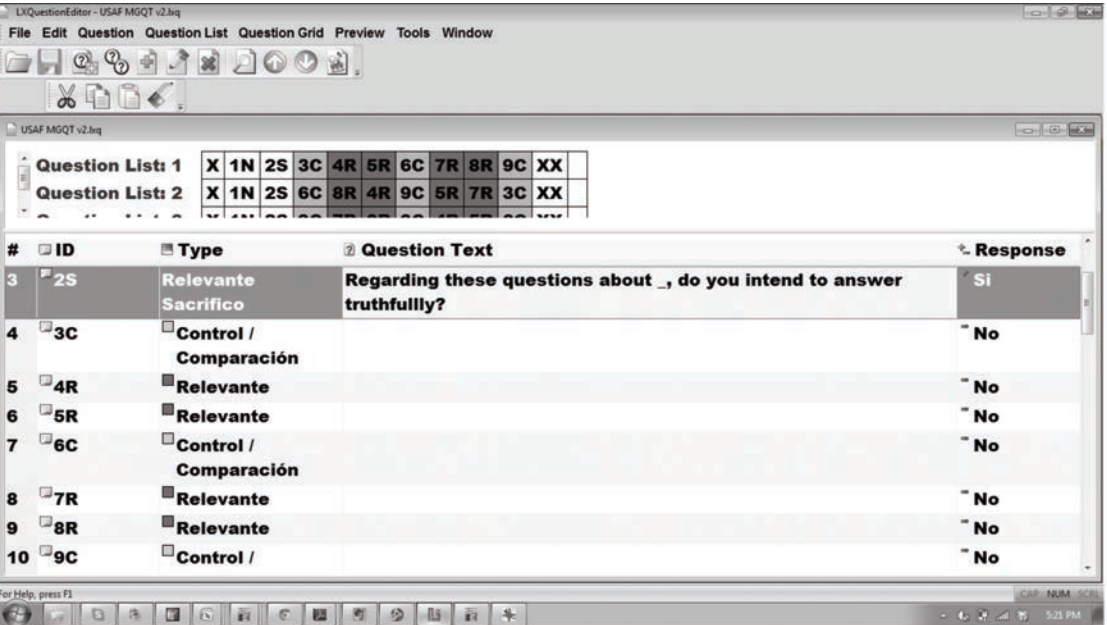
The template will be opened in the Question Editor, which runs as an application within the LX Software.

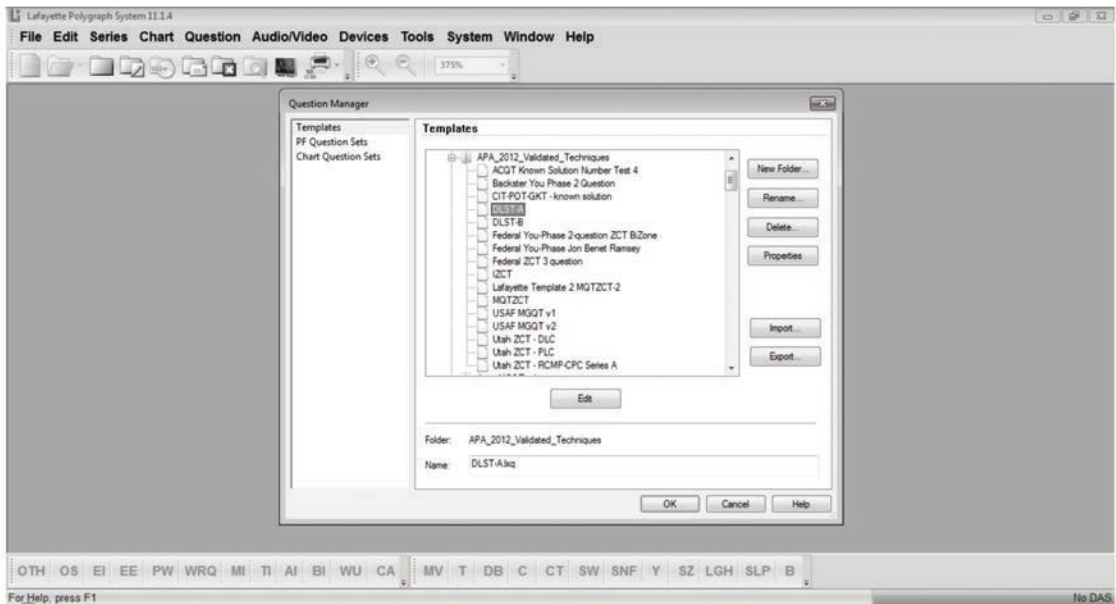
Use of the question editor requires skills similar to using a word processor or spreadsheet application. Simply click in the cell (area) containing the information you wish to edit.

Multiple lists can be maintained within a single template. The lists can be synchronized if they are to contain identical questions or un-synchronized if they questions differ from one list to another. The synchronize feature can be activated/de-activated from the “Questions” menu within the Question Editor application. Questions with identical question labels will be synchronized among the lists if the “Synchronize” menu item is checked. Lists can contain different questions if the setting is un-checked.

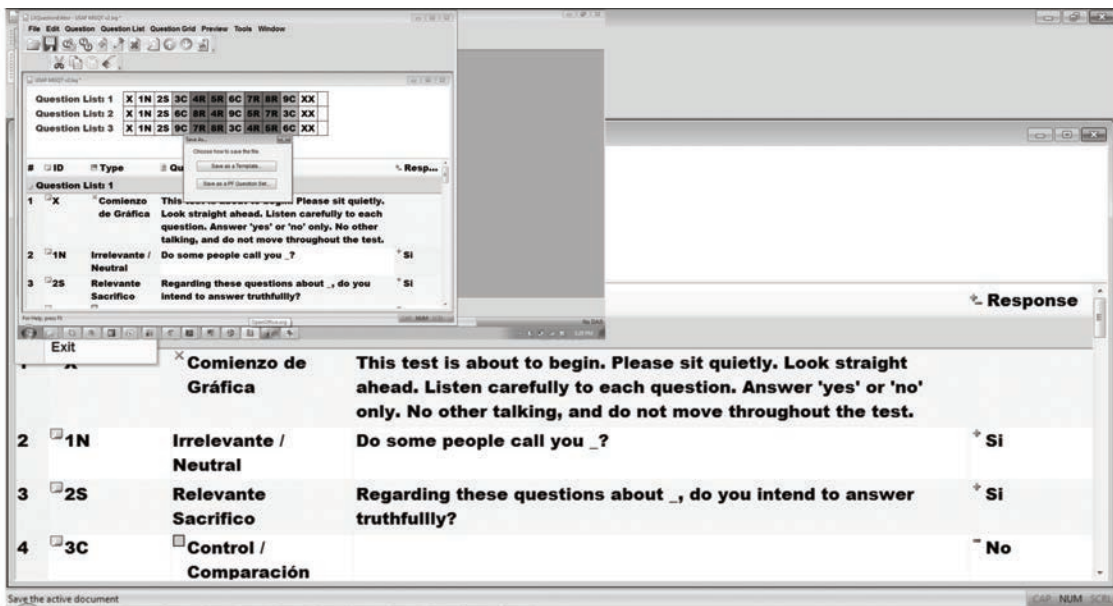


For examiners who edit questions on the fly while conversing naturally with the examinee, the font size of the new question editor can relieve eyestrain and make more attention available to the examinee and question content.

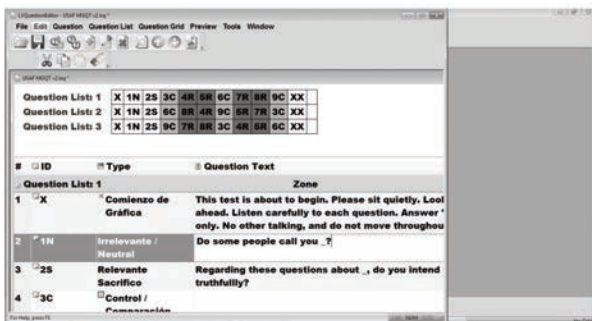




The “Save” button and menu item will be unavailable (greyed-out) until any change is made to a list.



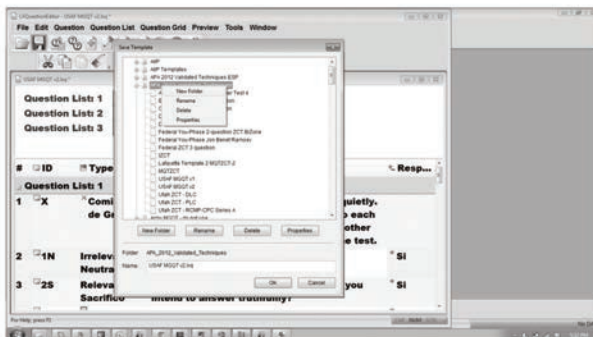
If the “Save” menu item or button are available then you will know there are un-saved changes to the question template.



The “Save” and “Save as” menu items have similar functions and you will be given the option to save the edited content as a template or a PF Question Set. Saving as a template will make the edited questions available for use with future examination in addition to making the template available for use with the current exam. Saving as a PF Question Set will attach the edited questions to the current exam PF, and the edited questions will not be available for future exams.

If you choose to save as a PF Question Set you will be given the opportunity to rename the question template.

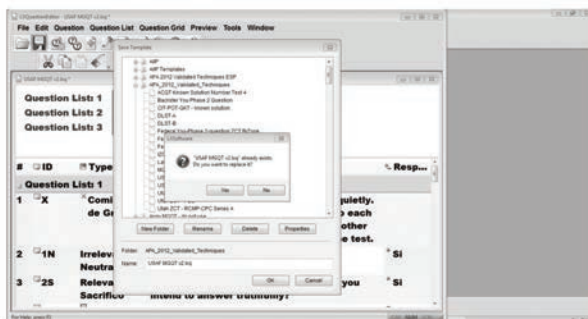
If you choose to save as a Template you will be given the opportunity select the location (folder) and the question template name.



You can click on any folder to select that location. Or right-click on a folder to create a new folder location.

Your edited template will be stored in the same/current location if you do not make any changes.

You can edit the Template name after you chose the location. If you do not edit the Template name it will be saved with the same name. To avoid the inadvertent destruction of important question templates, you will be given the option to over-write the existing saved template with the edited question template.



The question template will be attached to the exam PF when the template is saved. If you want to attach a template to the exam PF without editing it – if the template is already edited to your satisfaction – simply click on the folder button near the bottom-middle of the the chart recorder. Then select the desired template and click “OK”. The folder button serves the same function as the “Templates” menu item.



Questions and question formats are central to effective polygraph examinations. Many examiners will inevitably develop and maintain a variety of question templates to facilitate various testing objectives and various testing circumstances. However, questions and templates should be edited and individualized for each examinee according to the subtleties and idiosyncrasies of the information discussed with the examinee, and this is done at the time of the examination. It is therefore critical that all examiners become intimately familiar with the features, options, and characteristics of the question editor. Examiners who are unfamiliar with the Question Editor will eventually find themselves fumbling at an in-opportune moment. The Lafayette questions editor is a powerful tool that can facilitate the maintenance of effective conversational rapport while also accomplishing the necessary work-flow of the examination. All examiners should spend a few minutes investigating the features and capabilities of the question editor and the potential for using the features to improve the examination process. As always do not hesitate to contact Lafayette Instrument with any questions or suggestions.

**Any information or claims reported in any manufacturers tech articles or advertisements do not necessarily represent the views or opinions of the Officers or Board of Directors of the AAPP and members should evaluate any information based on current peer reviewed studies.*



■ T: 613.634.2594 ■ TF: 866.765.9770
 ■ F: 613.767.9007 ■ limestonetech.com
 Credibility Assessment | Sex Offender Management | Biofeedback Instrumentation | Customized Solutions

The power of CIT investigations using Polygraph Professional Suite

The recent meta-analytic survey being distributed in the polygraph community focuses our attention on the polygraph techniques that provide the best results. It was no surprise to learn that one of the most scientifically researched and validated methodologies available to polygraph science today, the Concealed Information Test, made the cut and is on the approved list. *"In cases amenable to both the CIT and CQT, a CIT should always be conducted first. It should be the preferred method for evidentiary applications."* (Krapohl, 2011).

As the use of CIT examinations increases the professional examiner should give due consideration to polygraph software and instrumentation that maximizes the power of this effective polygraph technique. Since 2003 Limestone Technologies has offered examiners the most comprehensive CIT utilities available anywhere. Limestone's in house software engineers have taken the time to ensure that the CIT examination technique is as easy and effective as possible.

Got EDA? CIT examinations demand a reliable and proven electro dermal measurement